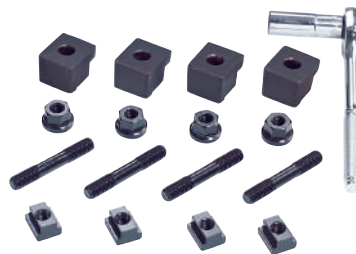


FIVE-AXIS COMPACT MULTI-POWER VISE

Model: ACM-130, 160



- Suitable for CNC 5-Axis Machining Centers, horizontal and vertical CNC Machining Centers
- Shortest Length with **Big Jaw Opening**
- Extremely High Accuracy and Repeatability
- Special MULTI-POWER design enhances clamping force of **0~5000KG**



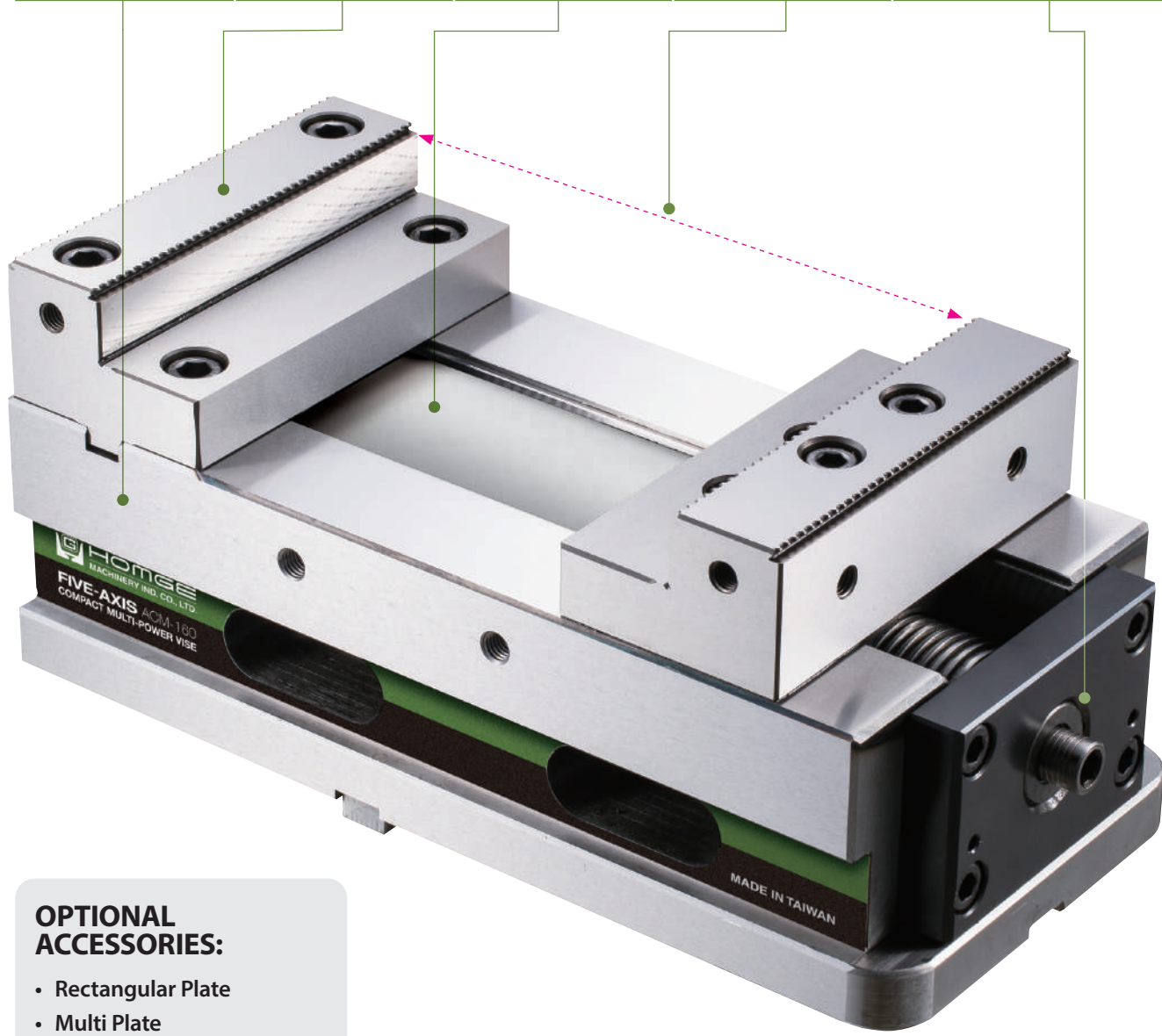
STANDARD ACCESSORIES:

- 2 pcs of Alignment Wedge
- 4 pcs of Clamp
- 1 pc of Wrench

OPTIONAL ACCESSORIES:

- Serrated Jaws
- Soft Jaws

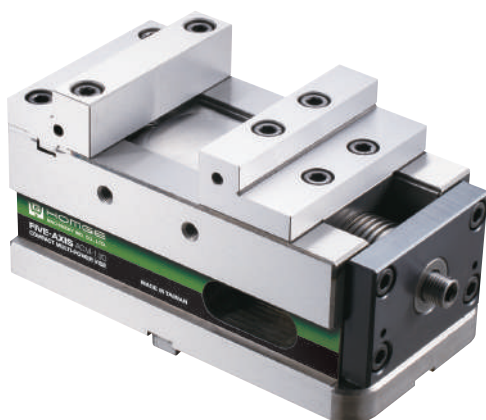
<p>Vise body is made of Ductile Iron above FCD 60 grade and its slideways are hardened to HRC 52, which makes the vise tensile strength with high precision accuracy.</p>	<p>Vise jaws are made of High quality Tool Steel (SCM440) and Hardened to achieve HRC 55, which makes vise clamp the workpieces easily and firmly.</p>	<p>Special Leadscrew Covers protect Leadscrew from swarf and avoid any possible damage to internal parts.</p>	<p>Compact design with big jaw opening, which enhances machine space utilization.</p>	<p>The patented MULTI-POWER SYSTEM is built of high grade BEARING STEEL which doubles the clamping force. Adjustable clamping force 0~5000kg. With this special patented system the pressure is more consistent and eliminates oil leakage and maintenance problems associated with Hydraulic Vises.</p>
1	2	3	4	5

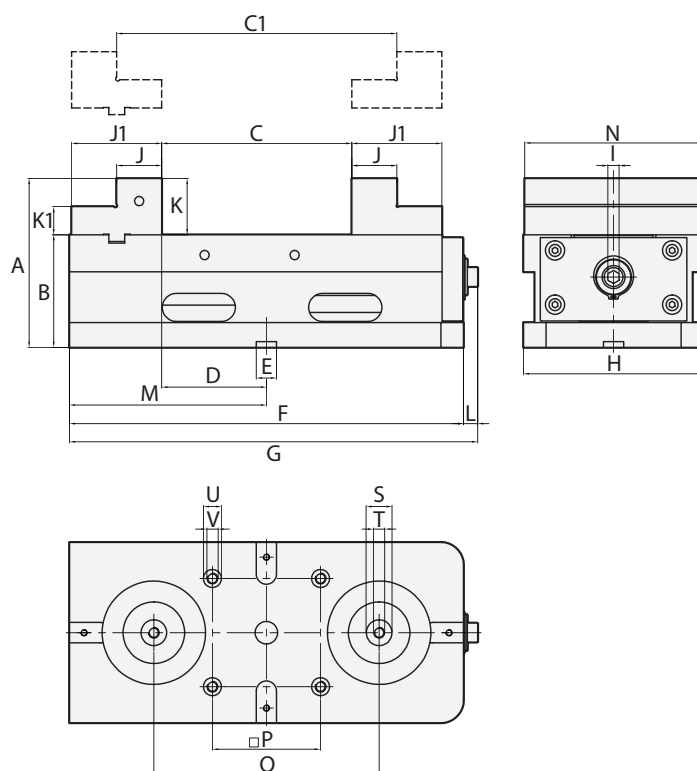
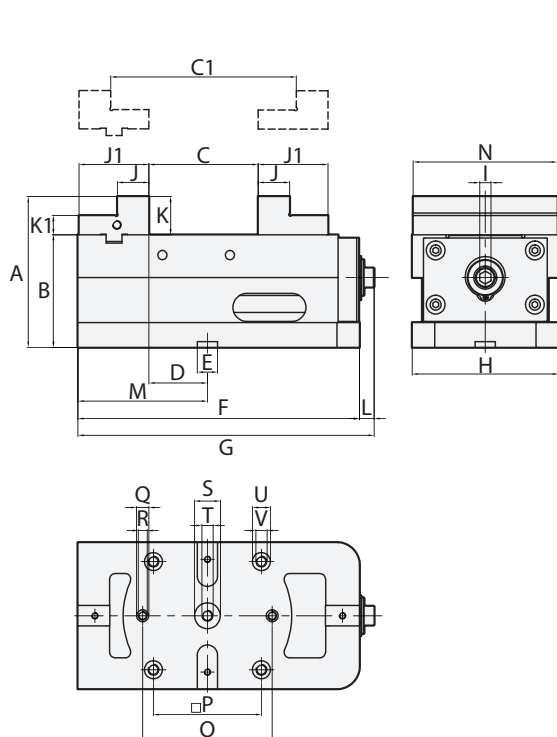


OPTIONAL ACCESSORIES:

- Rectangular Plate
- Multi Plate
- Pull Studs
- Spacer Studs

Please refer to Page 22~53
Zero Point Quick Change Devices


ACM-130

ACM-160

SPECIFICATIONS (Material: Vise body S50C: HRC 50 / Jaws SCM440: HRC 55)

Unit: mm

Model	A	B	C	C1	D	E	F	G	H	I	J	J1	K	K1	L	M	N	O	P
ACM-130	134	100	105	173	52	18	250	263	130	10	28	62	34	17	13	115	128	115	96
ACM-160	150	100	167	247	93	18	350	363	160	10	40	80	50	25	13	175	158	200	96

Model	Q	R	S	T	U	V	Max. Clamping Force	Weight(kg)
ACM-130	Ø11H7	M8x1.25P	Ø23H7	M10x1.5P	Ø16H7	M10x1.5P	5000kg	22
ACM-160	-	-	Ø23H7	M10x1.5P	Ø16H7	M10x1.5P	5000kg	40