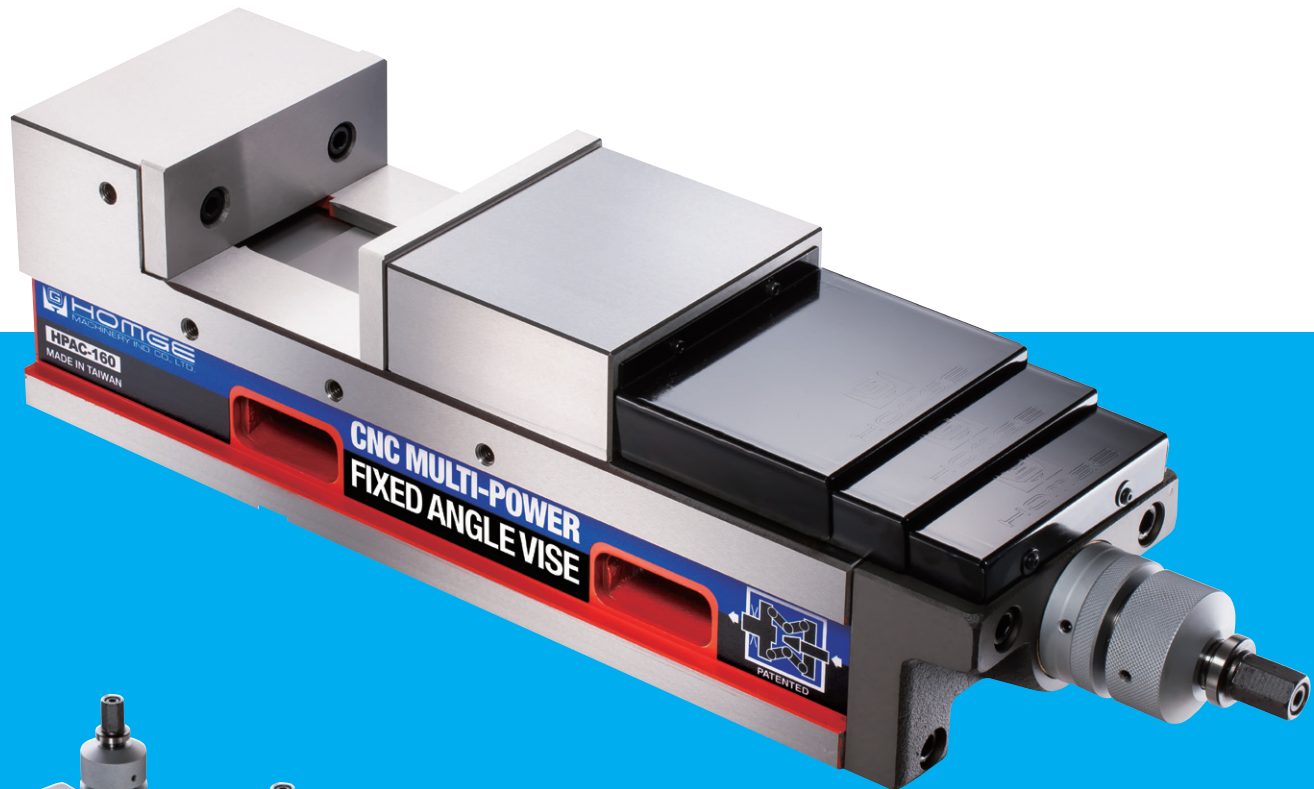


MULTI-POWER CNC PRECISION FIXED ANGLE VISE

Model: HPAC-130, 160, 160L, 200

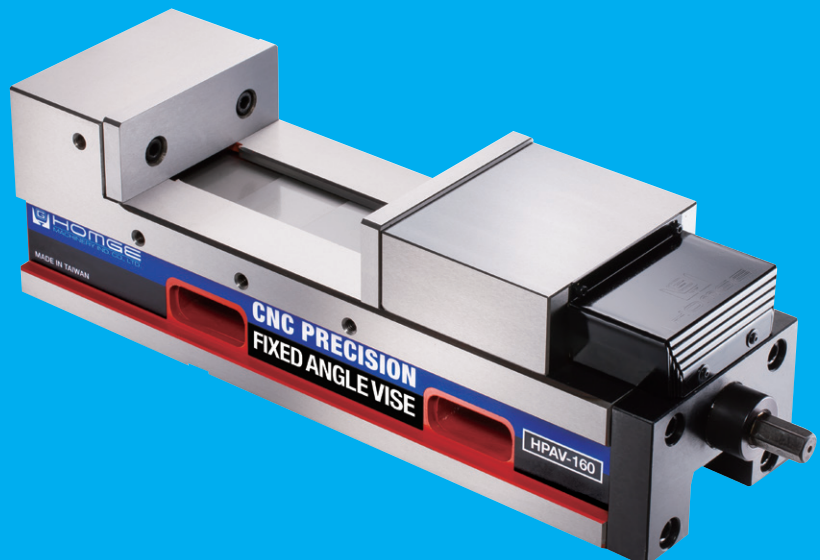
- Extremely high accuracy and repeatability
- Adjustable clamping force of **0~8000KG**

PATENTED
M458489
M395751
M390838
M435335



CNC PRECISION FIXED ANGLE VISE Model: HPAV-130, 160, 160L, 200

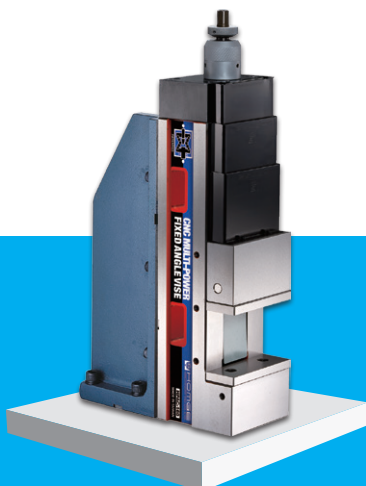
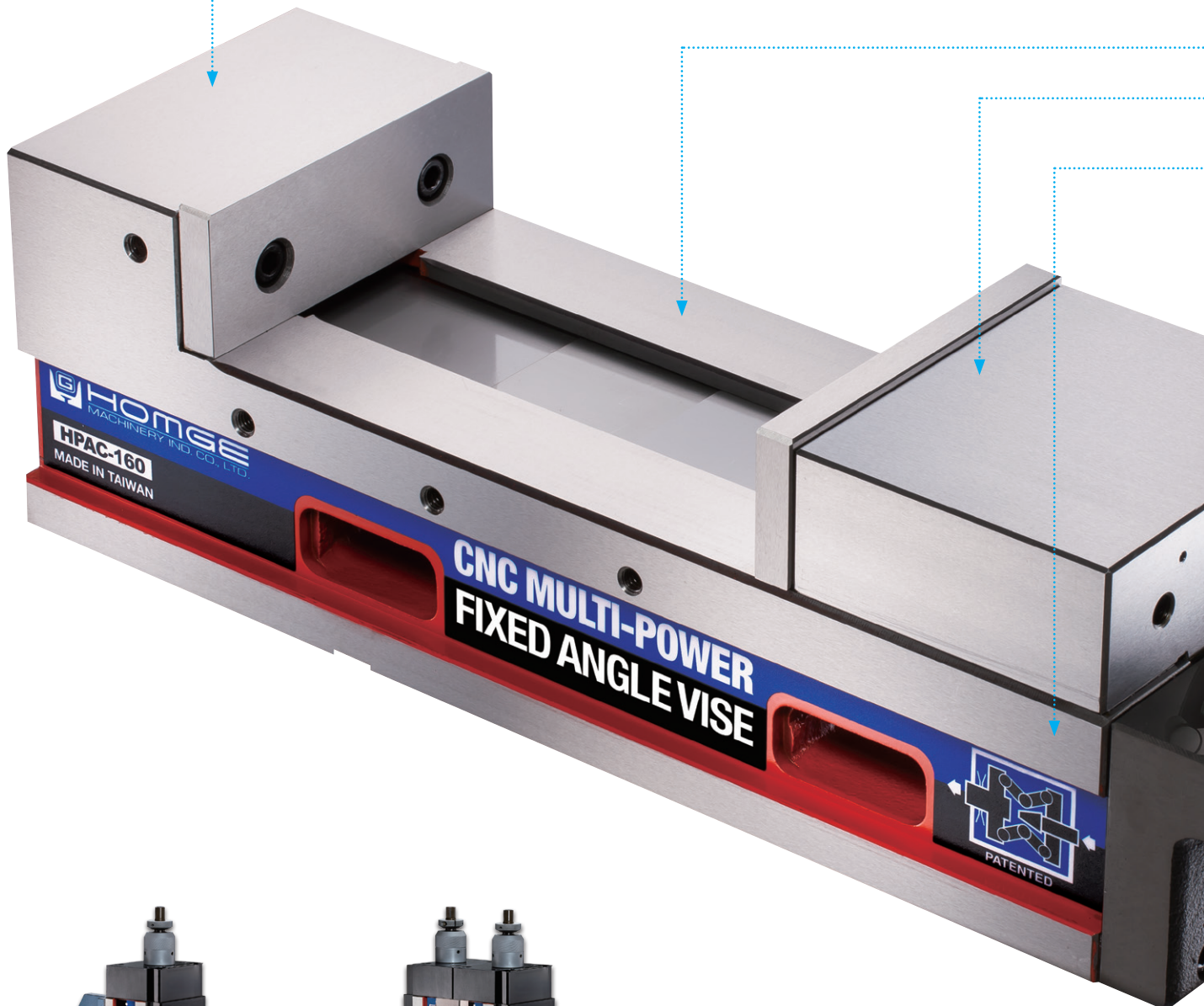
This vise has the same features as model HPAC above but has standard clamping screw instead of the MULTI-POWER SYSTEM.



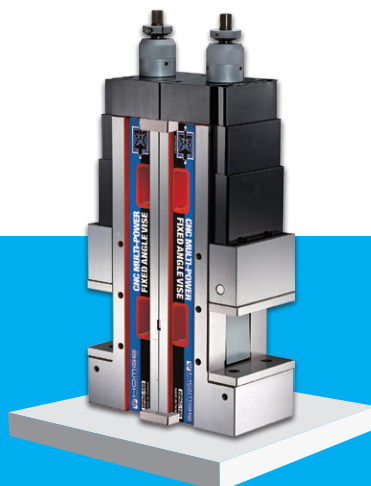
PATENTED
M458489
M395751
M390838
M435335

MULTI-POWER CNC PRECISION FIXED ANGLE VISE

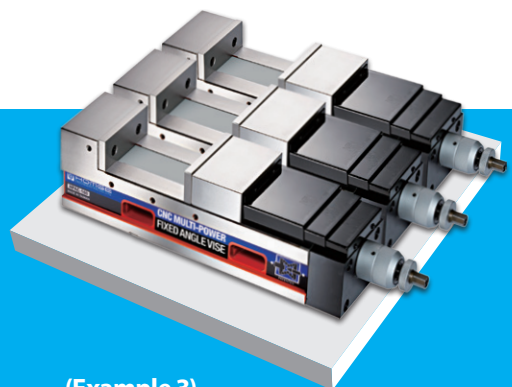
Model: HPAC-130, 160, 160L, 200



(Example 1)



(Example 2)



(Example 3)

1. Vise body is made of **Ductile Iron** above **FCD 60** grade for high precision and durability and is made in one solid piece. It has very high rigidity and with a force of 4500kg, the shape will deflect less than **0.01mm**.

2. Slide ways are **HARDENED** to **HRC 50°** to further increase durability and maintain positioning height over long use.

3. Using high-grade iron of over FCD 60 grade for high rigidity and also **ANGLE-LOCK SYSTEM** which automatically pulls the work-piece down to the accurate position of within **0.01mm** under 4500kg of pressure, this vise is most suitable for precision mould making on Machining Centers.

4. Vise can be mounted horizontally or vertically.

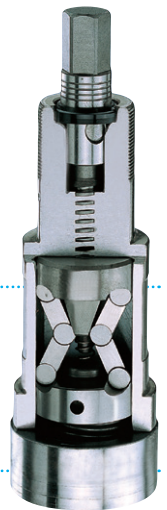
5. The patented MULTI-POWER SYSTEM built of **HIGH GRADE BEARING STEEL** doubles the clamping force.

*With the **first half a turn** the vise will clamp with **2500kg** pressure.*

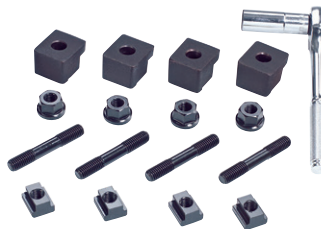
*With **a second half turn** it will apply **4500kg** of clamping force.*

This special patented system makes the clamping force constant.

6. **Adjusting stop ring:** this simple and effective presetting device enables to **preset each desired clamping force** and it guarantees to repeat each clamping operation at the same clamping force.



The patented MULTI-POWER SYSTEM built of **HIGH GRADE BEARING STEEL** provides extremely high clamping pressure. The pressure is more consistent and eliminates all leakage and maintenance problems associated with Hydraulic Vises.



STANDARD ACCESSORIES

- 2 pcs of Alignment Wedge
- 4 pcs of Clamp

OPTIONAL ACCESSORIES

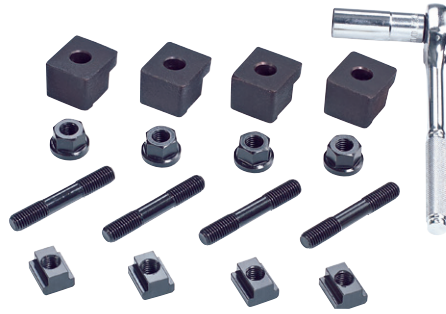
- Cross Grooved Jaws
- 'V' Jaws
- Combined Jaws
- Step Jaws
- Front / Back Jaws

Clamping Force

8000 kg
6000 kg
4000 kg
2000 kg

Fixed height so several vises can be used together.

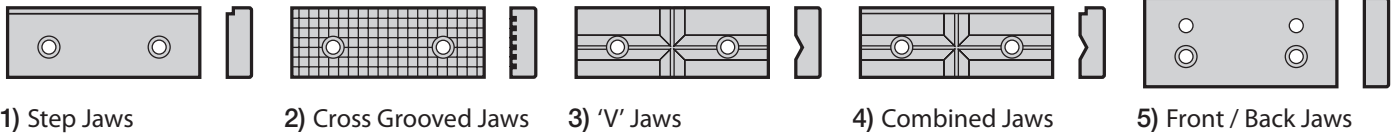
This product is suitable for multi-unit applications on both horizontal and vertical CNC Machining Centers as well as conventional Milling Machines where heavy duty machining requires a very high clamping force.



OPTIONAL ACCESSORIES

- 2 pcs of Alignment Wedge
- 4 pcs of Clamp
- 1 pc of Handle

OPTIONAL ACCESSORIES



1) Step Jaws

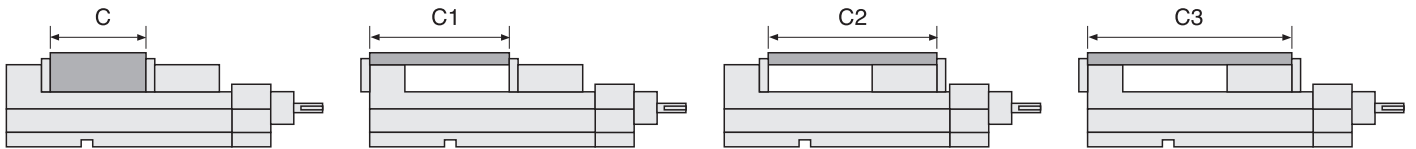
2) Cross Grooved Jaws

3) 'V' Jaws

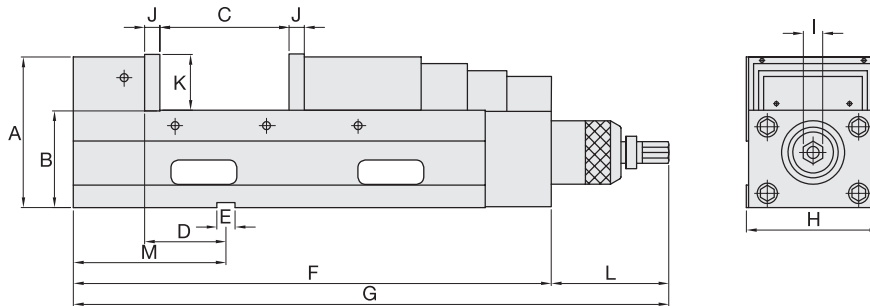
4) Combined Jaws

5) Front / Back Jaws

DIMENSIONS FOR 4 JAW PLATE POSITIONS



DIMENSIONS



SPECIFICATIONS (Material: FCD 60 Ductile Iron. Hardness: HRC 50°)

Unit: mm

Model	A	B	C	C1	C2	C3	D	E	F
HPAC-130	147	95±0.01	0-190	70-260	115-305	185-375	80±0.02	18	475
HPAC-160	160	105±0.01	0-250	85-325	140-375	220-460	80±0.02	18	560
HPAC-160L	160	105±0.01	0-300	85-375	110-395	190-480	80±0.02	18	580
HPAC-200	170	110±0.01	0-305	90-380	155-440	240-530	100±0.02	18	635

Model	G	H	I	J	K	L	M	Max. Clamping Force	Weight (kg)
HPAC-130	583	131	19	15	55	120	150	6000kg	47
HPAC-160	670	161	19	15	58	120	165	8000kg	65
HPAC-160L	690	161	19	15	58	120	165	8000kg	67
HPAC-200	743	201	19	18	63	120	197	8000kg	95